

User Manual

For BMW Linux screen

1. Product Introduction

*This product is a smart screen specifically designed for older BMW cars, which can replace the OEM car screen and add functions such as CarPlay/Android auto/AirPlay/Autolink to the car, while also retaining OEM car features.

*By using this product upgrade your older BMW car to a more convenient modern car. You can use navigation, voice assistant, Calls, Bluetooth music, and more in CarPlay or Android Auto;

You can also watch the online video on the Internet through AirPlay/Autolink when you stop for a drive rest, or use the mobile USB hard disk to enjoy the videos and pictures you downloaded.

*We provide excellent after-sales service. When there is a problem with the product, as long as you contact us, we will definitely provide you with a solution. Your feedback will drive the growth of our company, and we will also strive to make every product better, not letting down any customer who chooses Bonroad.

2. Product content



BMW Multimedia Touchscreen



Power Cable



Video Cable



USB Cable



Screen Bracket
(The bracket varies by model)

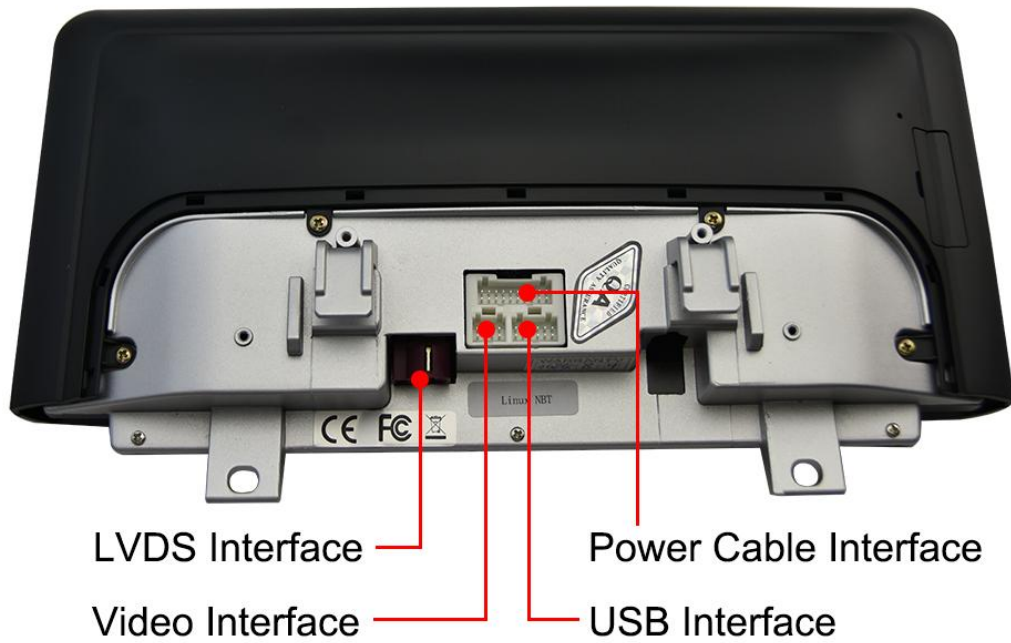


AUX Cable
(NBT model doesn't have this line)

3.Installation instructions

3.1 Interface and Cable Descripton

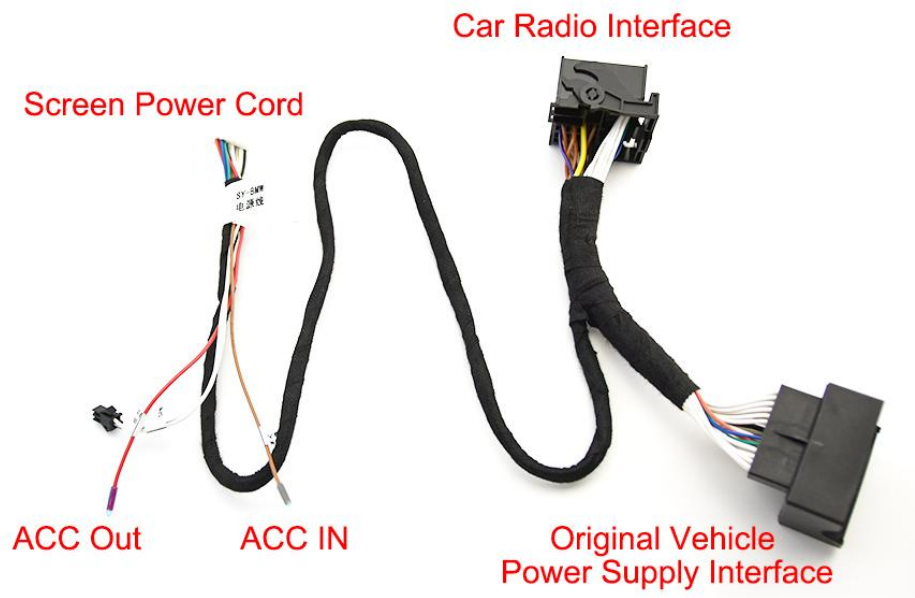
1). Screen Cable Interface



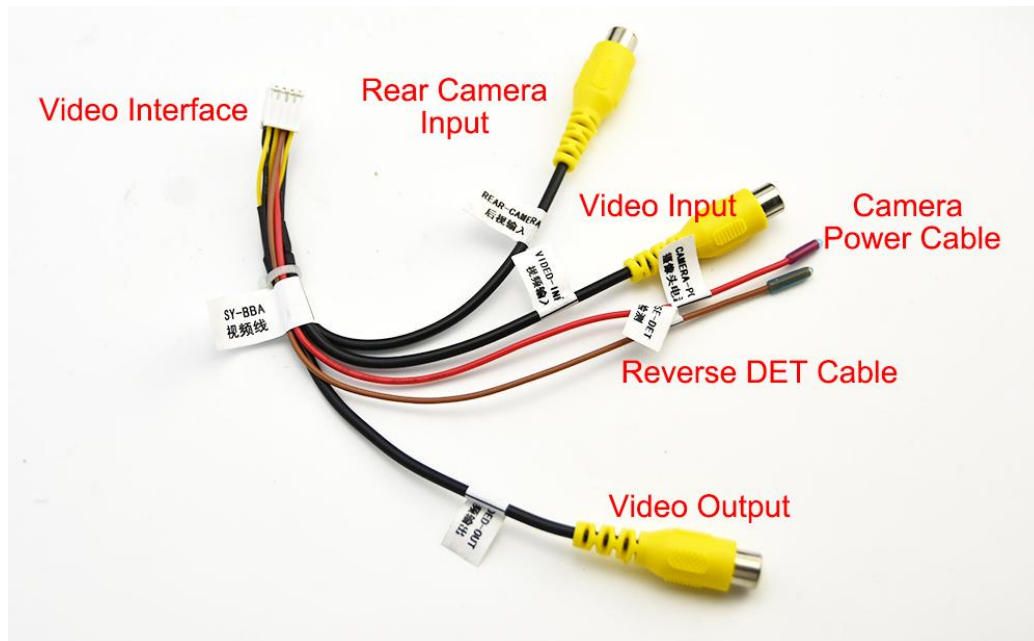
2) .USB Cable



3) Power Cable



4) Video Cable



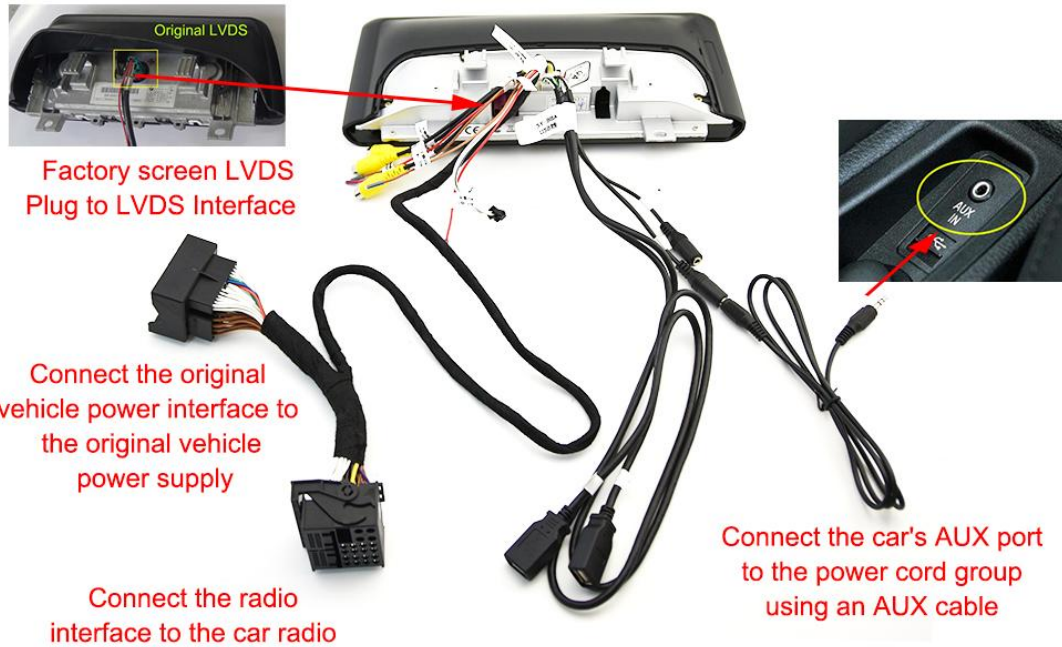
5) AUX Cable



Due to the fact that not all vehicle models require AUX cables, some models are not equipped with this cable

3.2 How to install

1). Basic Cable Connection



2) . Fiber Optic Cable Connection

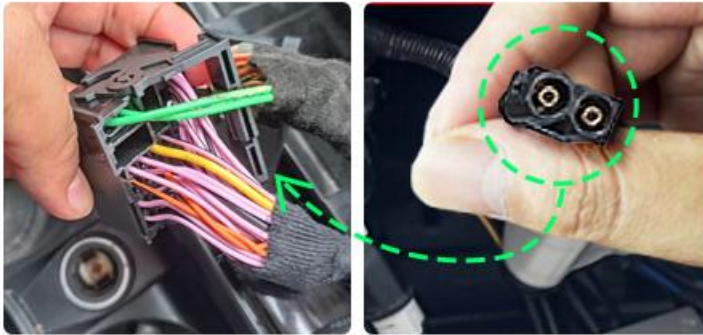
If your car has a green fiber optic cable , you need to remove the cable in our harness.



Make sure to properly transfer the 2P optical fiber cable on the ISO plug of the original vehicle.



Take out the 2Pin optical fiber cable connect it to the Linux harness



3) Camera Cable Connection

If your car camera is original , you don't need to connect any cable.

If your camera is retrofitted , connect the cables according to the instructions below.

4. Basic Setting

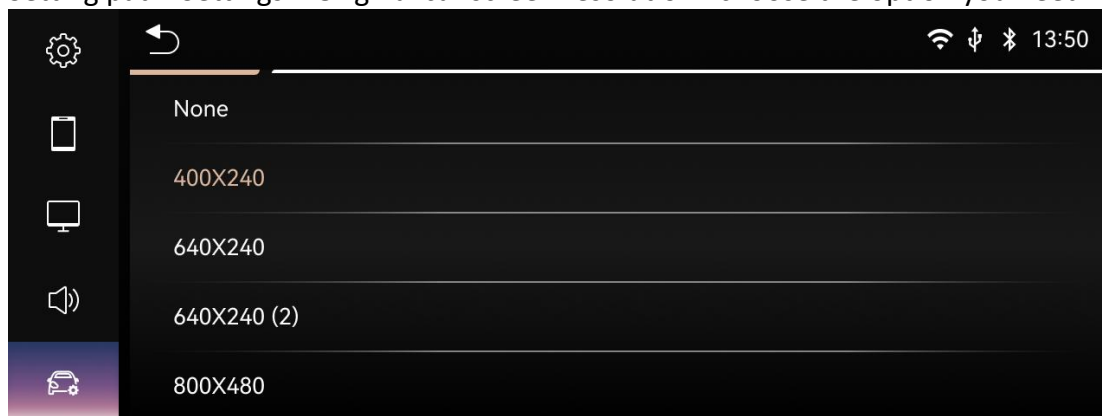
After your car is installed, please complete the following three basic settings before the first use, otherwise your car may not function properly.

4.1 Resolution Setting.



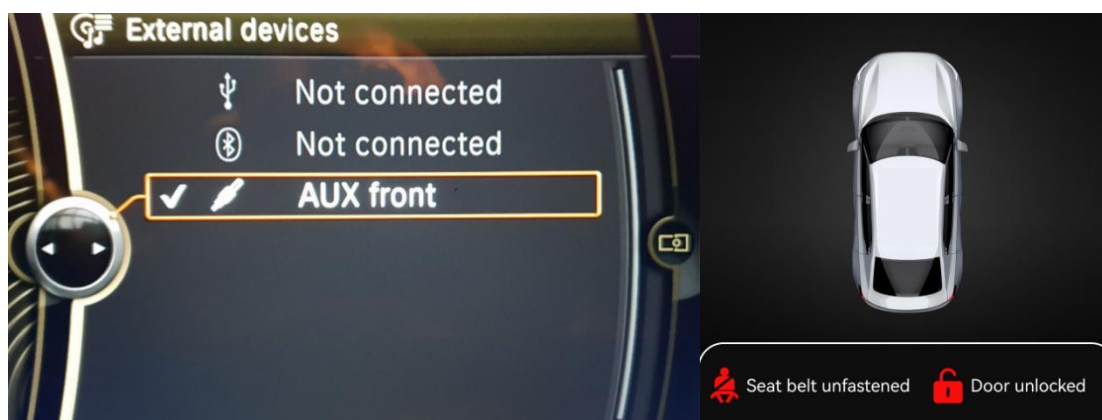
When you enter the OEM car interface, there may be screen distortion and misalignment of icons. This is because the resolution of the OEM car interface does not match the screen resolution. You need to set the resolution corresponding to the car radio in the Linux system settings of the product.

Setting path: Settings > Original car screen resolution> choose the option you need.



4.2 AUX Audio setting

The product activates sound through AUX by default. If your car does not automatically activate AUX, please enable AUX in the original system multimedia of the car and select the corresponding AUX option in the product's Linux system. It is worth noting that a small number of car models do not have AUX function on the original vehicle. In this case, you need to find a car dealer to help you activate the AUX function, or use a BMW computer to activate it yourself.



4.3 Camera setting

You need to select your camera type in the Linux system settings of the product. The steps are as follows:

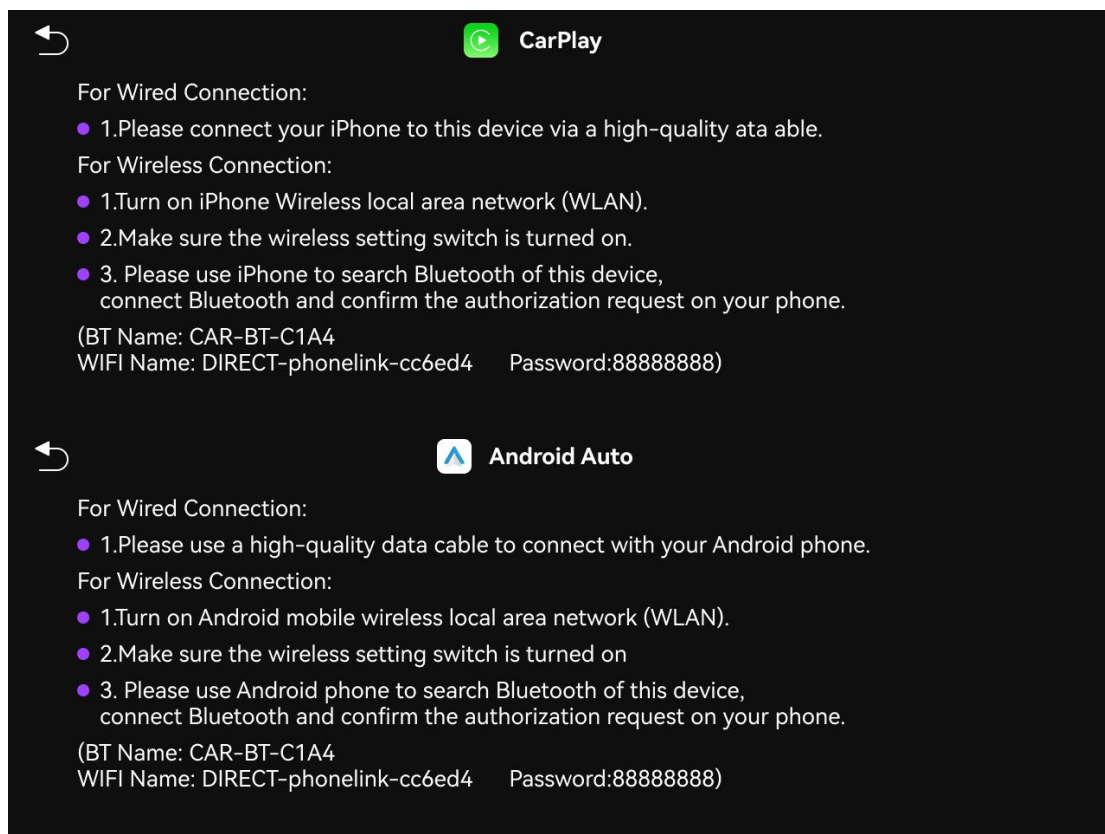
Original camera: Settings > Car settings > Reverse settings > Camera type > Original camera

Aftermarket camera: Settings > Car settings > Reverse settings > Camera type > Aftermarket camera



5. Carplay & Android Auto

Before using Carplay/Android Auto, please ensure that your phone is disconnected from the original car's Bluetooth and keep both Bluetooth and WiFi turned on.



←
 AutoLink

(Note Please download and install the AutoLink Pro app in the relevant app store of your Android phone or scan the QR code before using the Android phone for MirrorLink.)

Wired Android Phone Screen Mirroring:

- 1. Use the data cable to connect the device with the Android mobile phone, and confirm the authorization request on the mobile phone.

Android Mobile Wireless Projection:

- 1. Enter the mobile Autolink Pro application, select the wireless search device, click Connect and confirm the authorization.

QR code

←
 iOS Mirror

Wired iPhone Screen Mirroring:

- 1. Use the data cable to connect the device with the Apple phone, and confirm the authorization request on the phone.

Wireless iPhone AirPlay:

- 1. Please use your iPhone to search the device WiFi named "DIRECT-phonelink-xxx" and connect to it, password "88888888".
- 2. Select "Car-AirPlay" in Screen Mirroring from your iPhone.

←
QR code

Amazon

Google

←
Phone Type select

iPhone

Carplay

AirPlay

Android

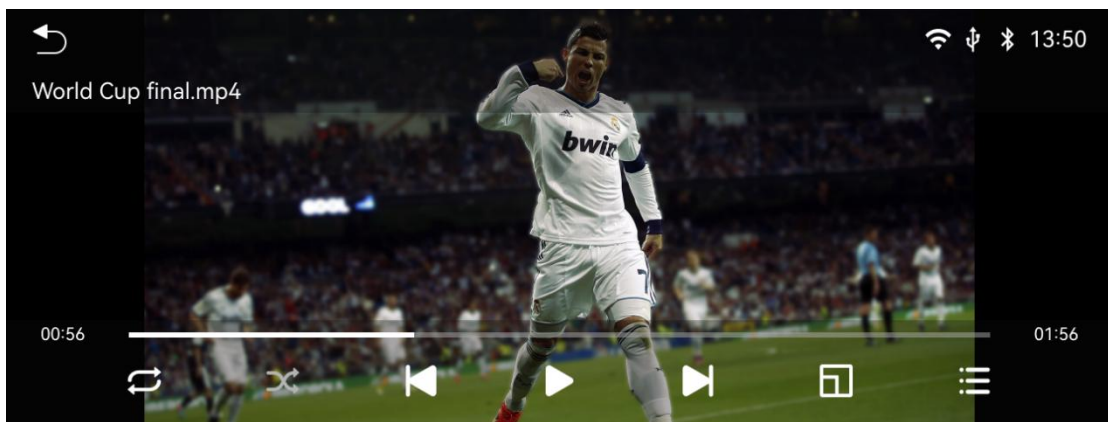
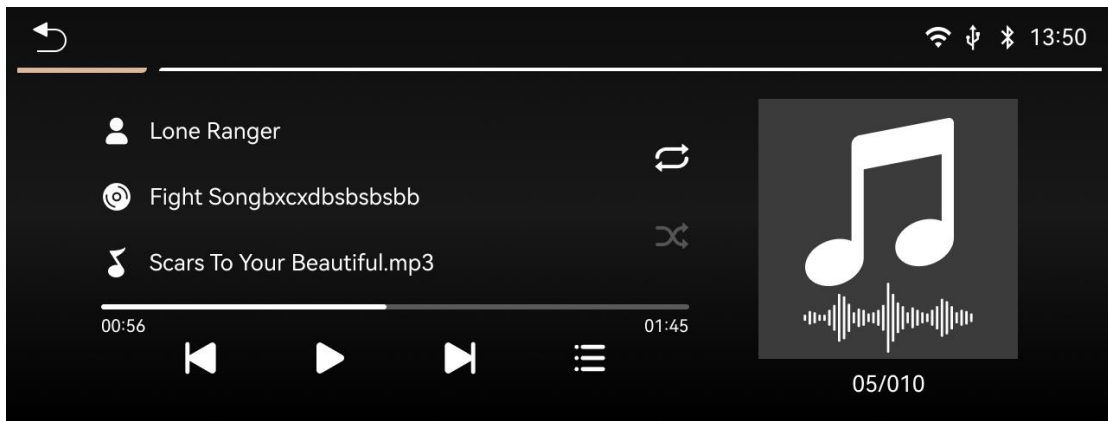
Android Auto

Autolink

6.USB

Insert your mobile USB hard drive into the USB port of the product, and you can

watch the downloaded movies, photos or listen to your favorite music in the USB function.



7. Youtube APP

