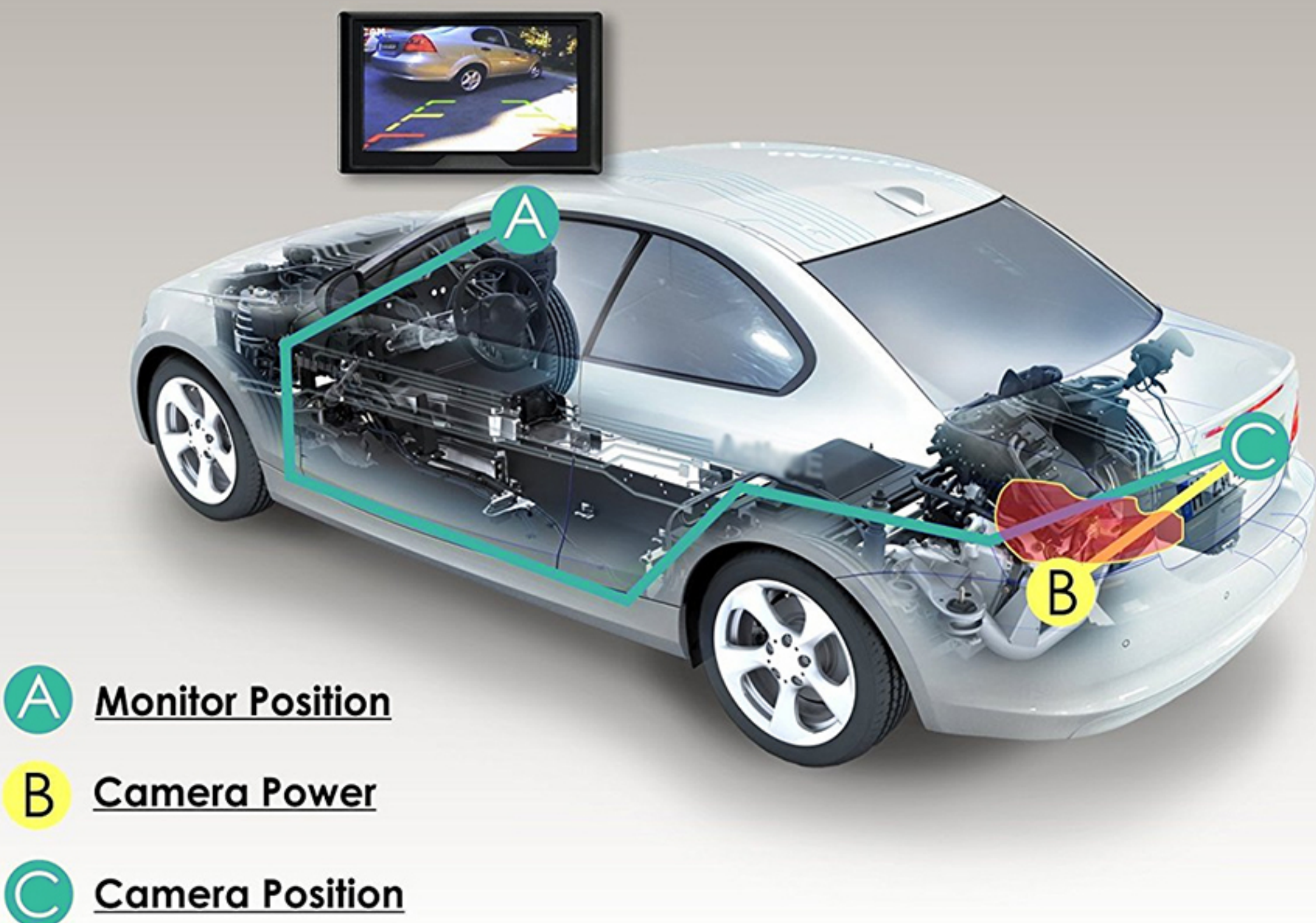
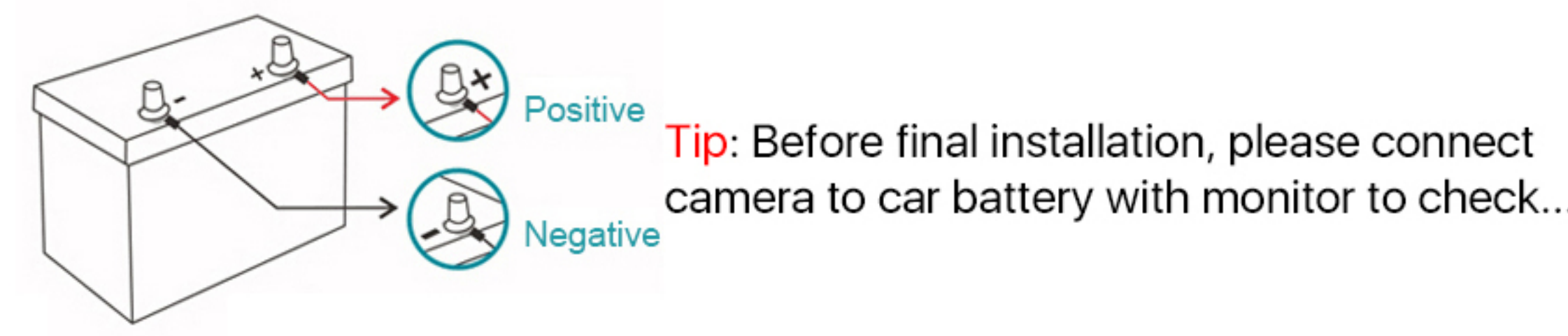
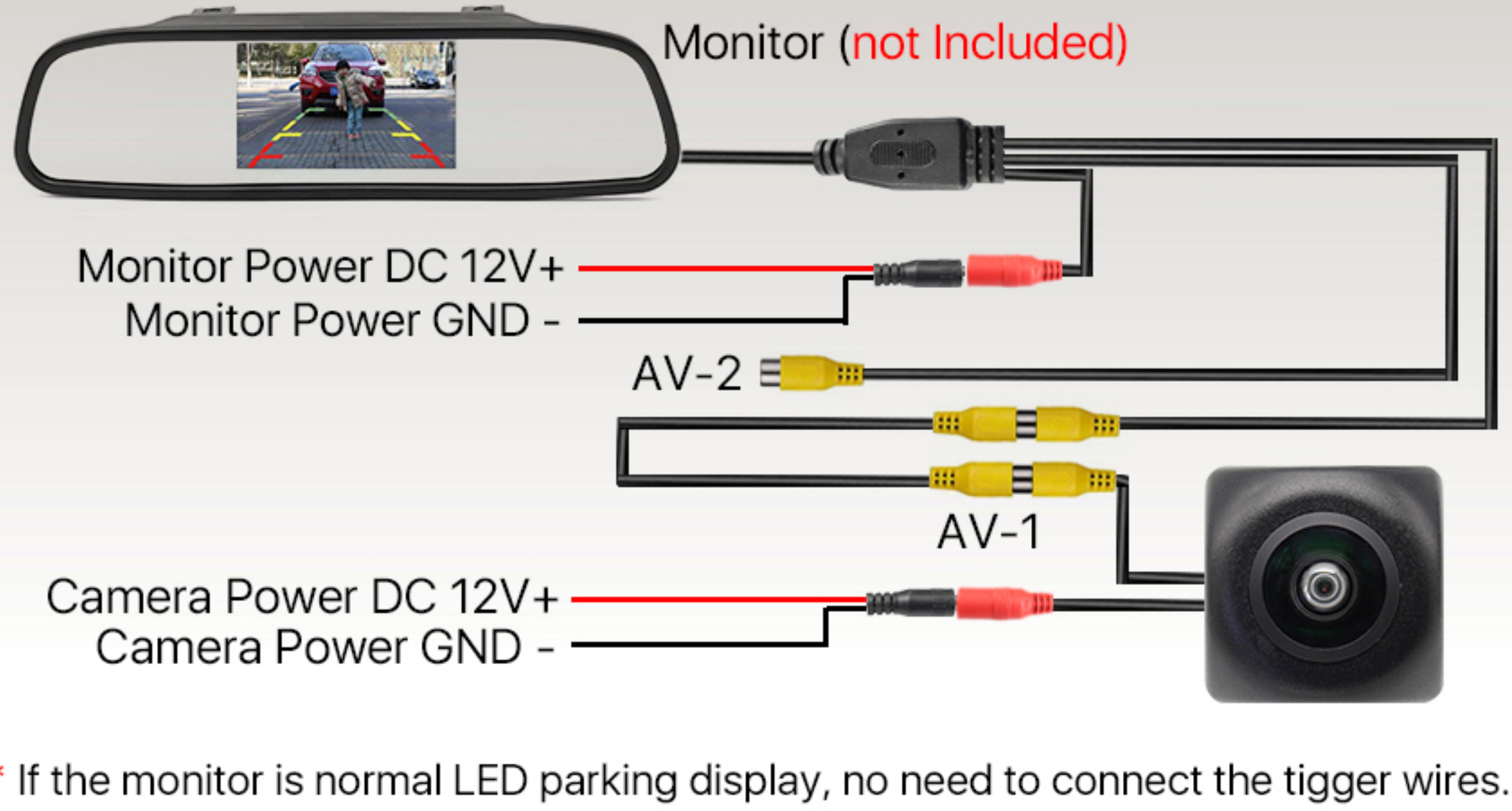
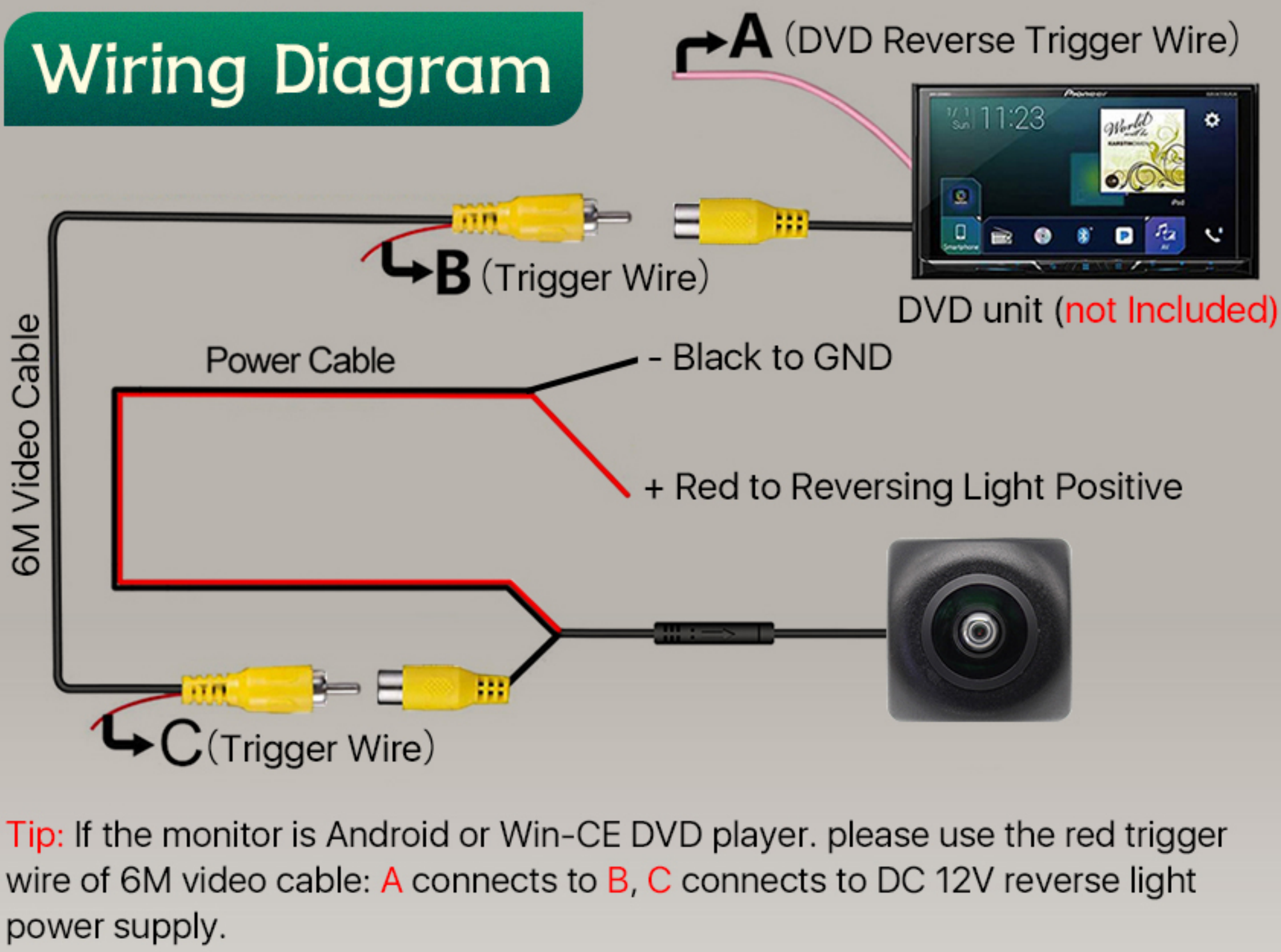


# VEHICLE CAMERA

## Product Manual

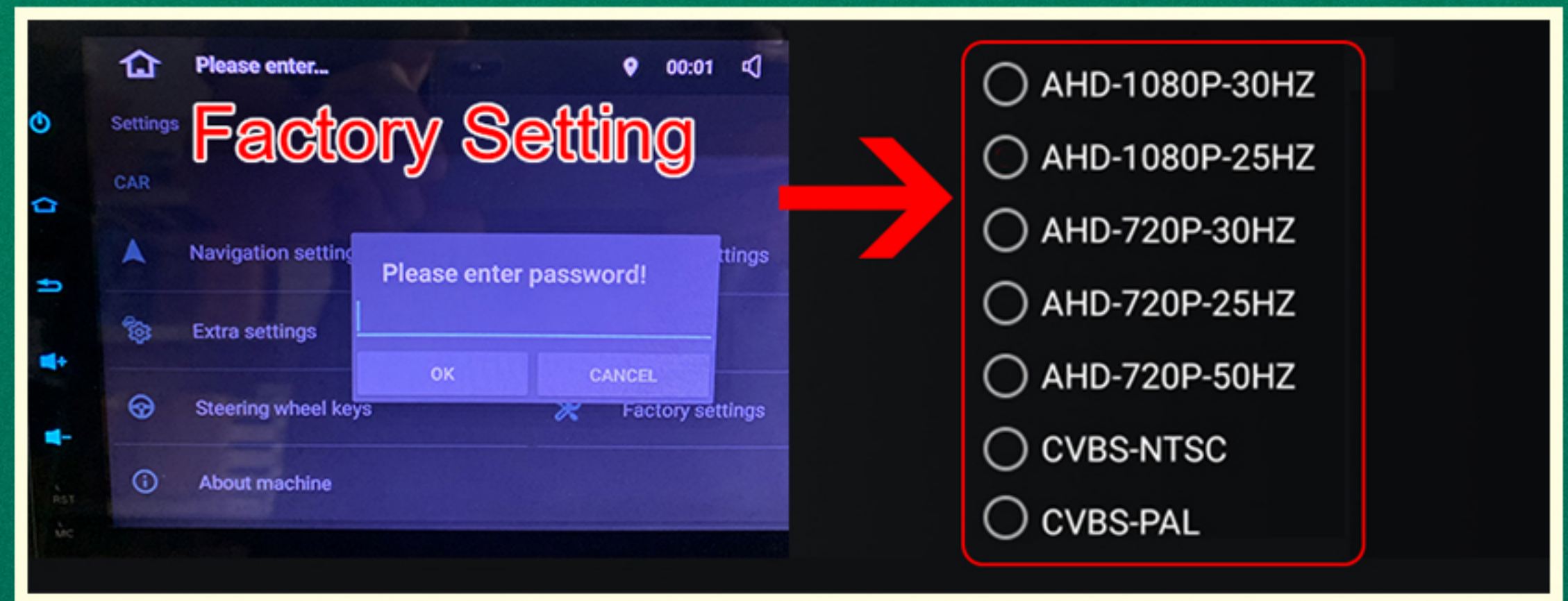


- A **Monitor Position**
- B **Camera Power**
- C **Camera Position**



### About AHD Signal

- \*How to check whether the Android unit supports AHD camera?
1. Go to car settings >>
  2. Factory settings >>
  3. Reverse settings >>
  4. Select AHD



If AHD is not supported, please cut the white wire.

Dear valued customer,

We hope you enjoyed our product/service and had a great experience with us. If you have a spare moment, could you kindly leave us a positive review? Your feedback is important to us and helps us improve. Thank you for your support! If you have any questions, please don't hesitate to contact us, we will help you solve the problem.

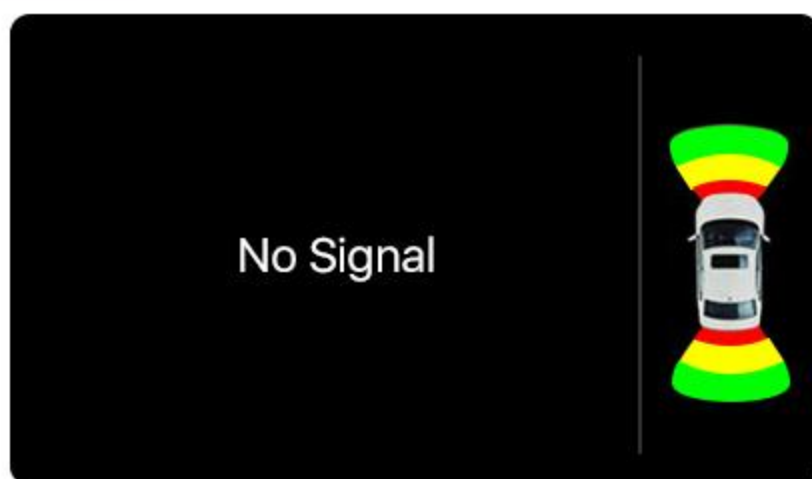
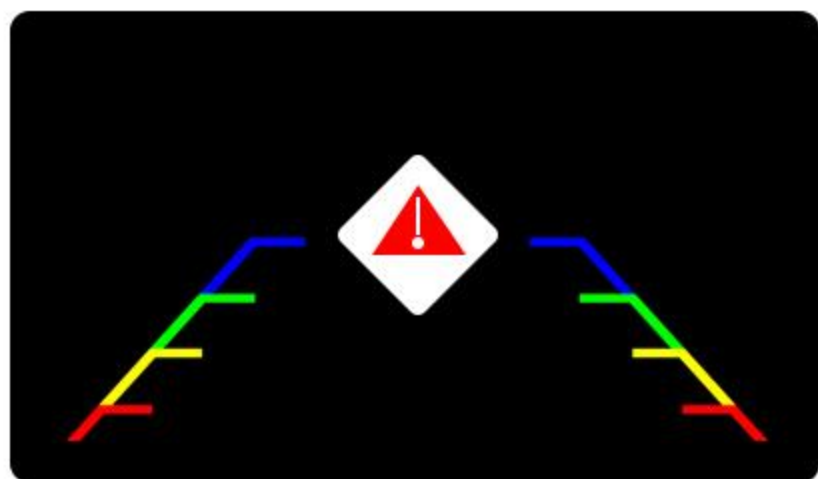


### Signal Control



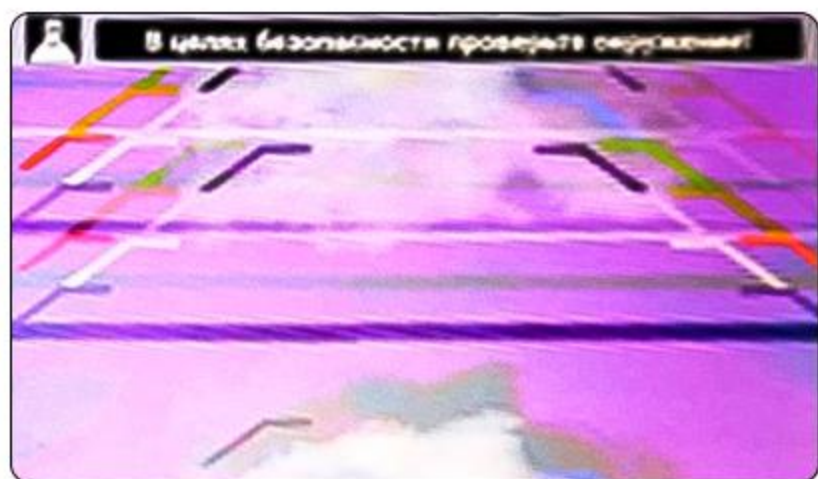


# About Signal Problem



\* If there is no camera image after connection, please check all wire connections and the voltage of the reversing light is normal:

1. Please check if all power cable plugs and 6M video cable is normal;
2. Please check if the power supply is DC 12V, or connect to car battery power supply and test it again;
3. Please check if the DVD trigger wire is connected to reverse light power properly;
4. If still not working, please connect the camera to AUX video input or TV to have a test.



Rectifier relay

\* Some Germany and American cars have output voltage interference after the engine is started. It will lead to the video signal output abnormal like screen flicker, stripes, can't switch back to the screen when turn off the reverse gear and so on.

→Please buy extra rectifier relay for camera.



\* When the screen shows the black and white image:

1. Please change the monitor system format setting, NTSC or PAL;
2. Please check if the 6m video cable is normal---test with a new 6m cable.