



Z-IOT CAM

步骤 1.安装APP

手机扫描以下二维码进行下载安装使用,安装后注册账号登录。
(IOS系统在APP store内下载安装)
软件名: Z-IOT CAM



开关机说明

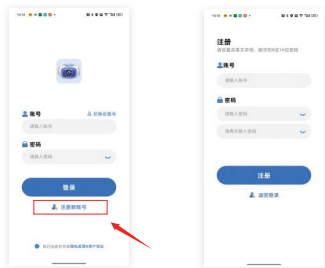
开机: 开关键长按2秒, 红灯常亮为开机。

关机: 开关键长按3秒, 红灯熄灭为关机。

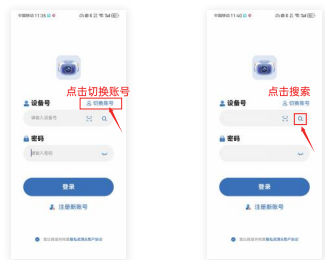
复位: 开机状态下, 长按开关键5秒, 蓝灯快闪变为红灯后红灯常亮。

注: AP模式红灯常亮, 远程模式蓝灯常亮。

注册账号方法1

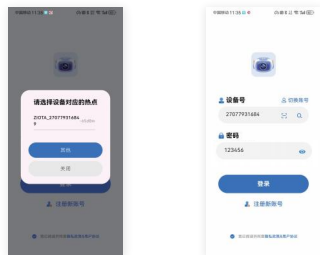


注册账号方法2



切换设备号

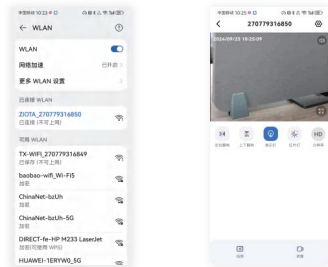
搜索设备



添加Z-IOT账号 密码默认123456

步骤 2.连接设备: 无网连接

1.连接机器自带热点, Z-IOT_开头的热点, 点击连接, 连接成功后返回APP, 点击画面即可观看。



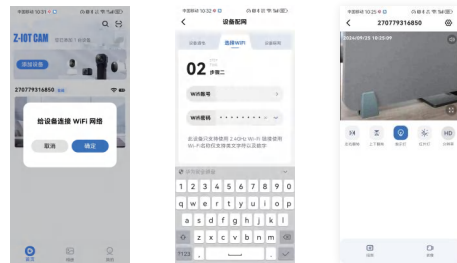
连接Z-IOT开头名称的WIFI



点击画面观看视频

步骤 3.连接设备: 有网连接

1.连接机器自带热点, Z-IOT_开头的热点, 点击连接, 连接成功后返回APP, 下面图示。



给设备连接WIFI

输入WIFI账号密码

连接成功 即可观看

注意:只要WIFI密码正确, 一定可以连接上, 如果连接不上, 先把路由器密码遗忘掉, 核实好密码, 然后再重新输入。



Z-IOT CAM

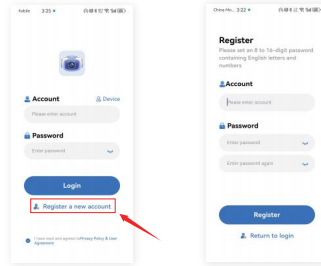
Step 1. Install the APP

Scan the QR code on your phone to download and install, then register an account and log in after installation. (Download and install iOS system in the APP store)
Software Name: Z-IOT CAM

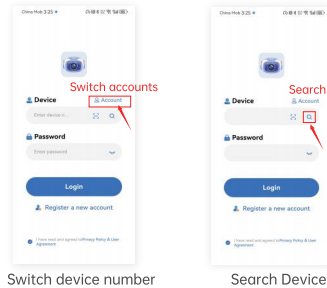


Power on: Press and hold the power button for 2 seconds. If the red light stays on, it is considered to be turned on.
Shutdown: Press and hold the power button for 3 seconds, and the red light will turn off to shut down.
Reset: In the power on state, press and hold the power button for 5 seconds, and the blue light will flash to a red light, then the red light will remain on.
Note: The red light in AP mode is always on, and the blue light in remote mode is always on.

Method 1 for registering an account

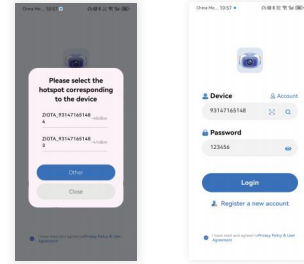


Method 2 for registering an account



Switch device number

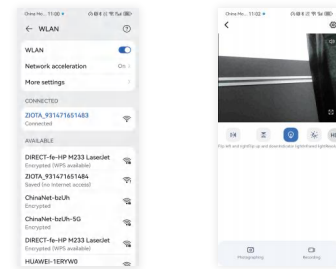
Search Device



Add ZIOT account password default 123456

Step 2. No internet connected devices

1. Connect the built-in hotspot of the machine, the hotspot starting with ZIOT, click on connect, after successful connection, return to the APP, and click on the screen to watch.

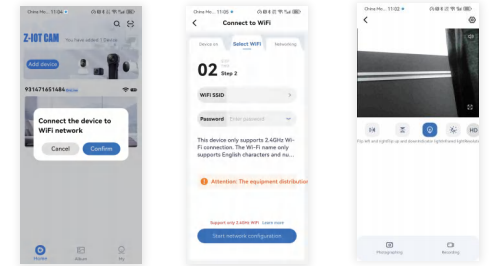


Connect ZIOT_WiFi

Click to watch the video

Step 2. Internet connected devices

1. Connect the built-in hotspot of the machine, the hotspot starting with ZIOT, click connect, and after successful connection, return to the APP, as shown in the following figure.



Connect to WiFi

Input password

Connection successful

Attention: As long as the WIFI password is correct, you can definitely connect. If you cannot connect,First, forget the router password, verify it, and then re-enter it.